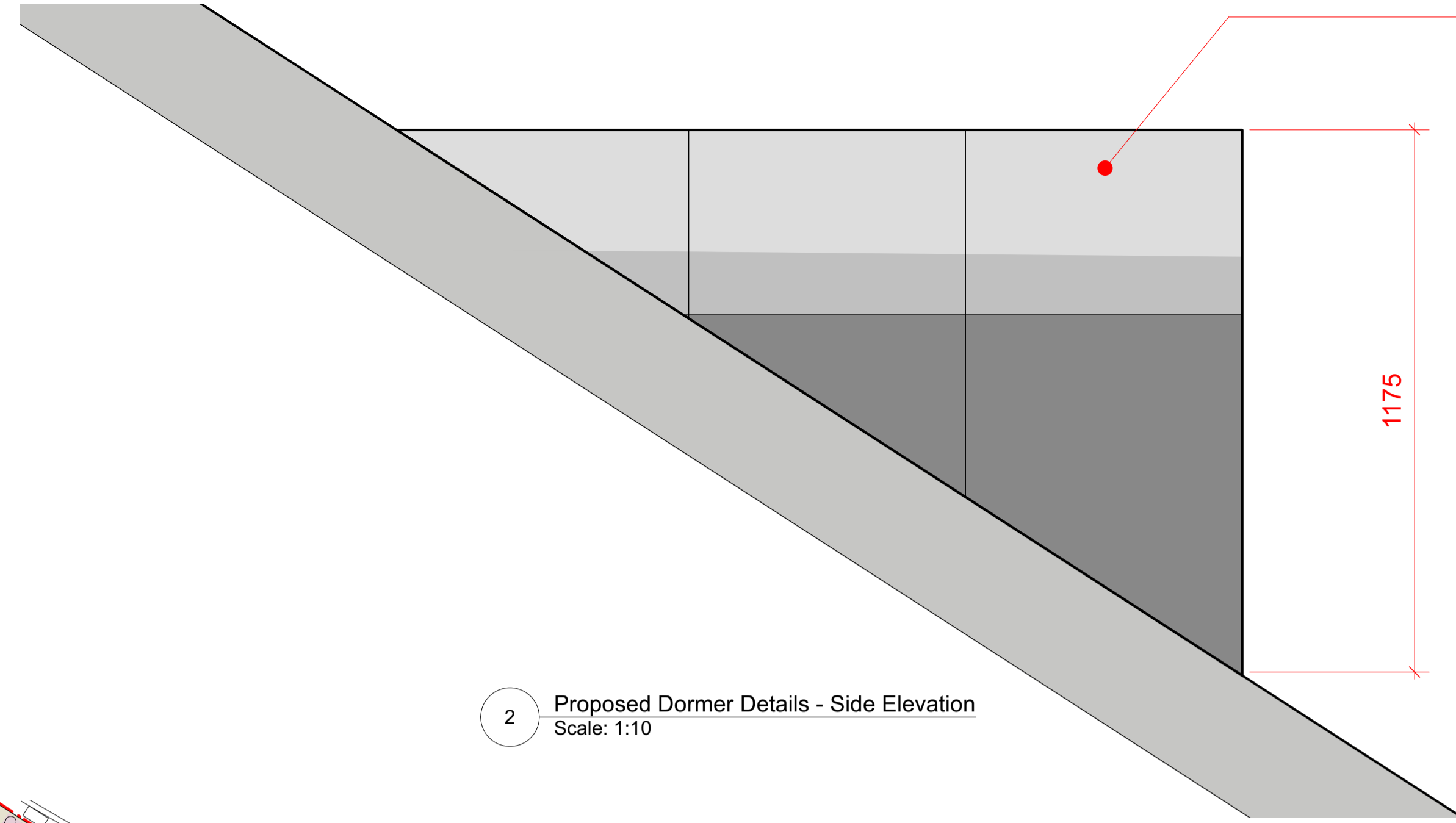


1 Proposed Dormer Details - Front Elevation  
Scale: 1:10

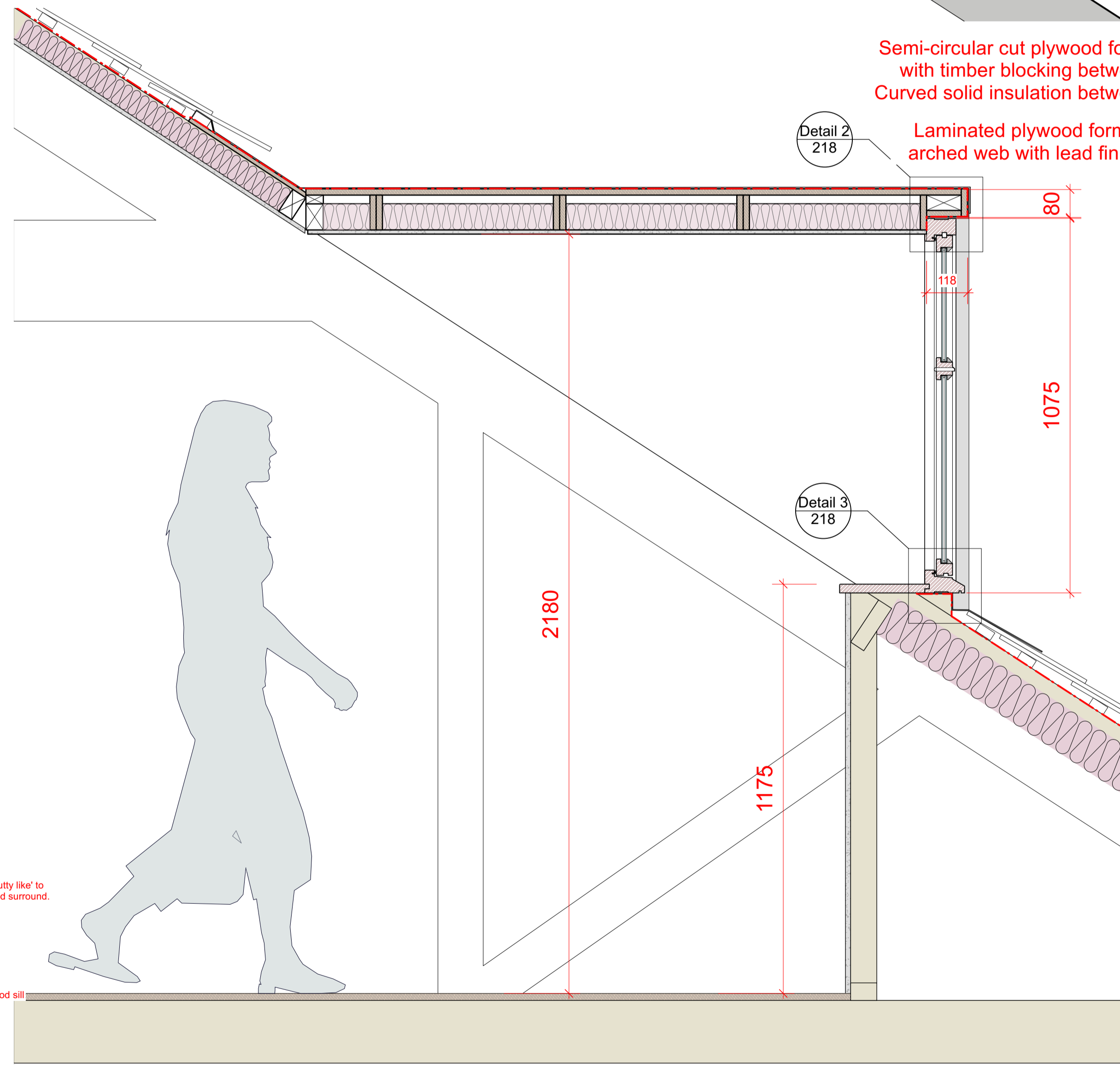
Patinated lead finish to barge.

Painted timber casement window.



2 Proposed Dormer Details - Side Elevation  
Scale: 1:10

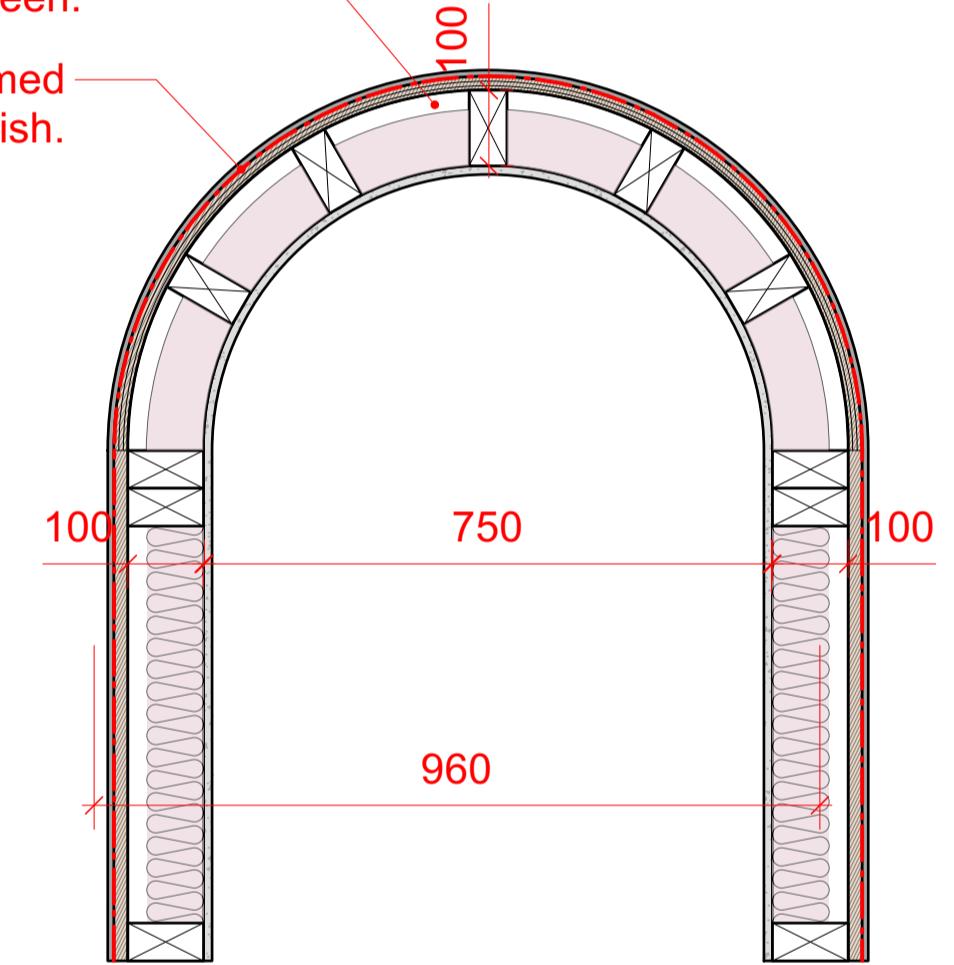
Patinated lead finish to round topped dormer window.



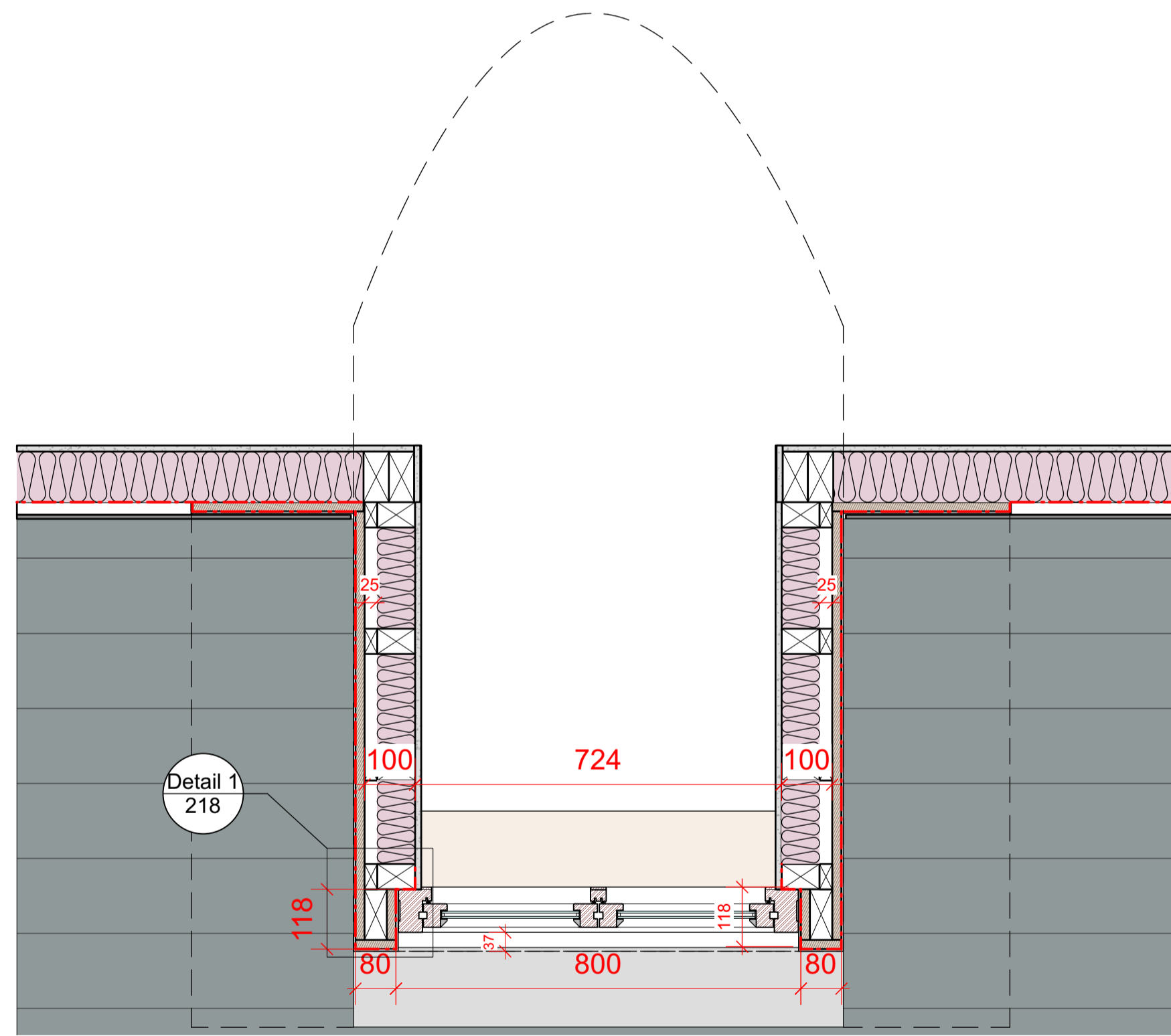
4 Proposed Dormer Details - Section A-A  
Scale: 1:10

Semi-circular cut plywood forms with timber blocking between. Curved solid insulation between.

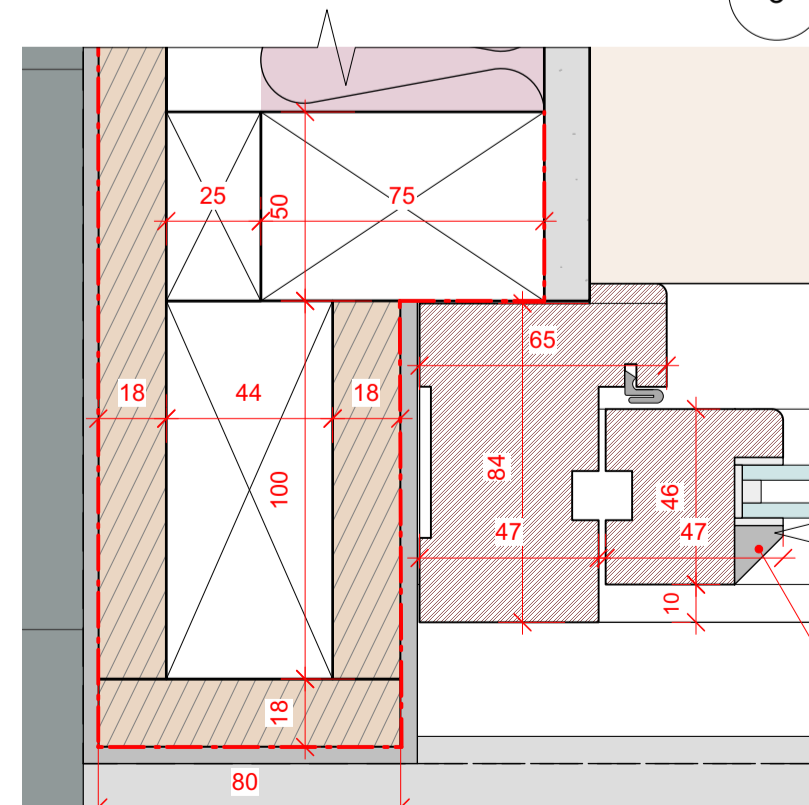
Laminated plywood formed arched web with lead finish.



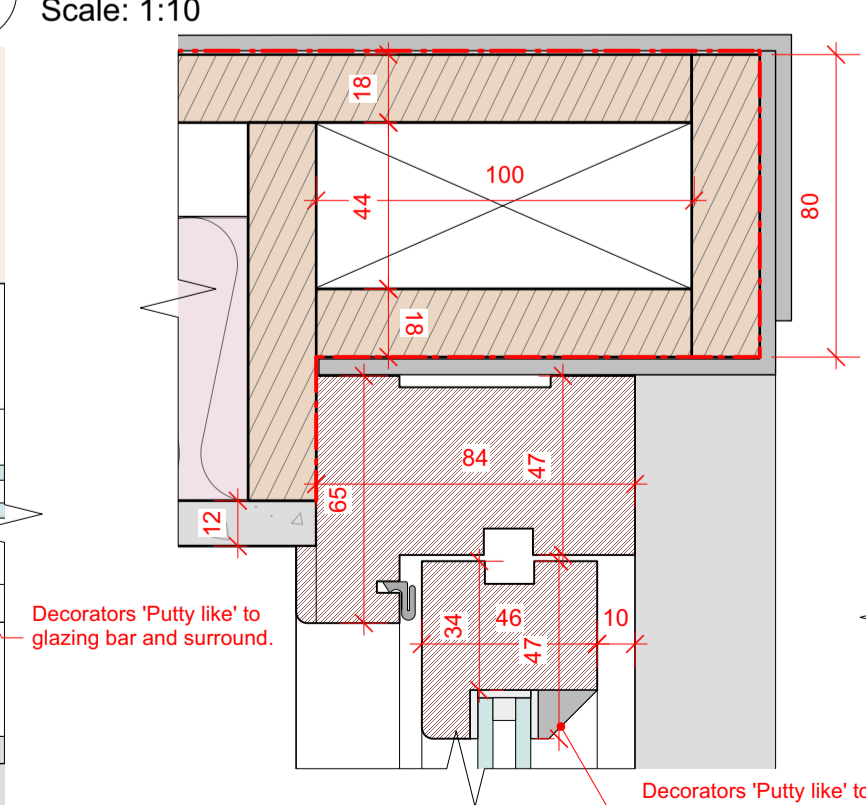
8 Proposed Dormer Details - Timber/Plywood Frame  
Scale: 1:10



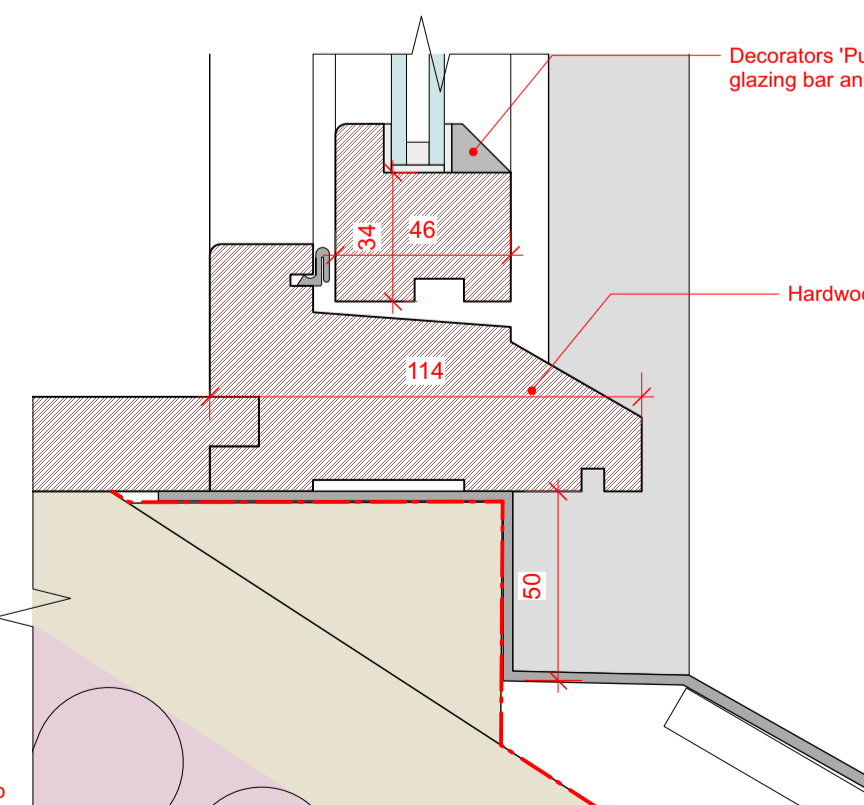
3 Proposed Dormer Details - Plan  
Scale: 1:10



5 Dormer Window Jamb Detail 1  
Scale: Half Actual Size



6 Dormer Window Head Detail 2  
Scale: Half Actual Size



7 Dormer Window Sill Detail 3  
Scale: Half Actual Size

Decorators 'Putty like' to glazing bar and surround.

Hardwood sill

Decorators 'Putty like' to glazing bar and surround.

Decorators 'Putty like' to glazing bar and surround.

REV	DESCRIPTION	DATE
B	Dormer barge reduced to 80mm. Window position altered. Details of joinery added.	07/11/23
C	Putty to window glazing. Dormer frame construction indicated.	09/11/23

JOB TITLE  
Proposed Loft Conversion to  
**The St. Brelade's Parish Hall**  
La Neuve Route, St. Brelade JE3 8BS  
The Parish of St. Brelade

DRAWING TITLE  
**TENDER**  
PROPOSED  
DORMER DETAILS

DATE	SCALE		
OCT 2021	1:10 @ A1		
JOB NO.	DRG NO.	REVISION	DRAWN
1009	218	C	MH

T +44 (0) 1534 499383  
F +44 (0) 1534 49938  
E office@rva-architects.com  
W www.rva-architects.com

1ST FLOOR, INDUSTRIA HOUSE,  
RED HOUSES, ST. BRELADE,  
JERSEY, JE3 8LD.

**RIVA ARCHITECTS**