



PHOTO 1 - PHOTOGRAPH SHOWING THE PARISH HALL FROM THE HARBOUR



PHOTO 2 - PHOTOGRAPH SHOWING THE ASSEMBLY HALL & FIRST FLOOR FLAT FROM THE HARBOUR



PHOTO 3 - PHOTOGRAPH SHOWING THE ASSEMBLY HALL & FIRST FLOOR FLAT



PHOTO 4 - PHOTOGRAPH SHOWING THE ASSEMBLY HALL & FIRST FLOOR FLAT



PHOTO 5 - PHOTOGRAPH SHOWING THE PARISH HALL FROM THE REAR



PHOTO 6 - PHOTOGRAPH SHOWING THE PARISH HALL FROM LA NEUVE ROUTE

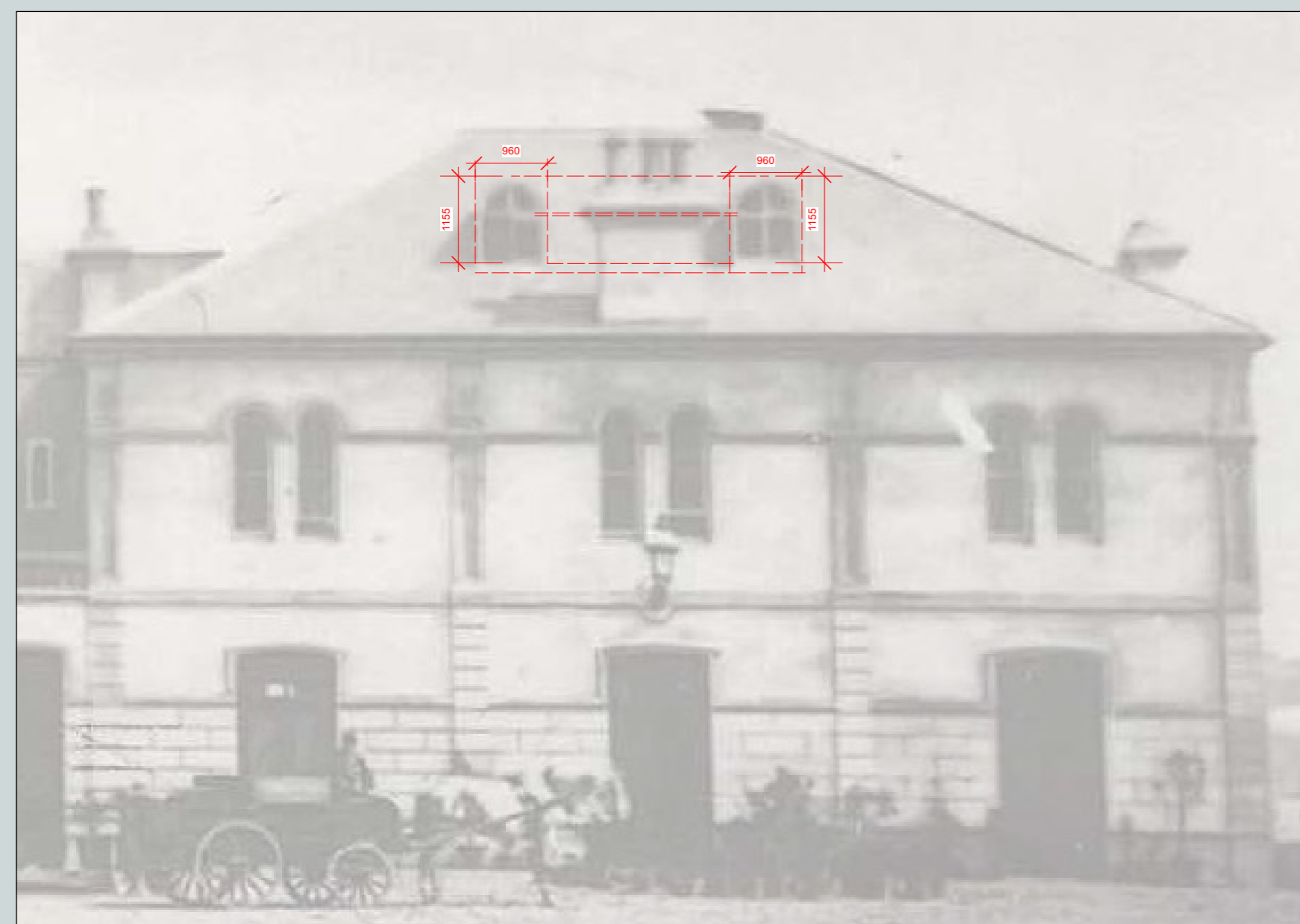


Figure 1 - Historic Photograph of the Terminus Hotel, St. Aubin from the South.

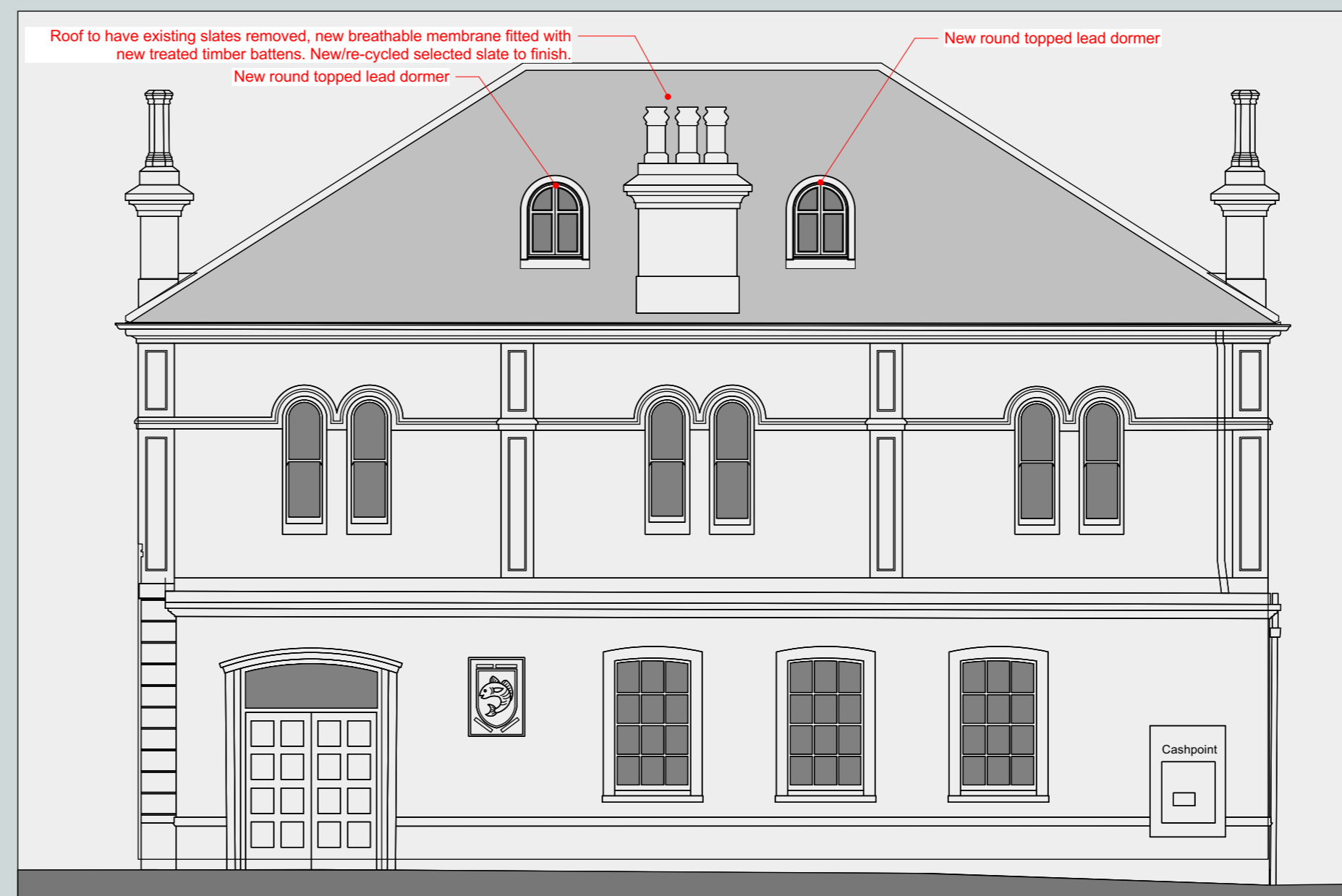


Figure 2 - Scaled drawing of Parish Hall Assembly Hall, St. Aubin from the South.

1 Historic Elevation Comparison
Scale: 1:75

REV	DESCRIPTION	DATE
JOB TITLE		
Proposed Re-roofing & Loft Conversion to		
The St. Brelade's Parish Hall		
La Neuve Route, St. Brelade JE3 8BS		
The Parish of St. Brelade		
DRAWING TITLE		
PRESENTATION		
Exterior Photographs		
DATE		SCALE
JULY 2023		NTS
JOB NO.	DRG NO.	REVISION
1009	PR00	-
DRAWN		DATE
MH		
T +44 (0) 1534 499383 F +44 (0) 1534 499338 E office@rva-architects.com W www.rva-architects.com		