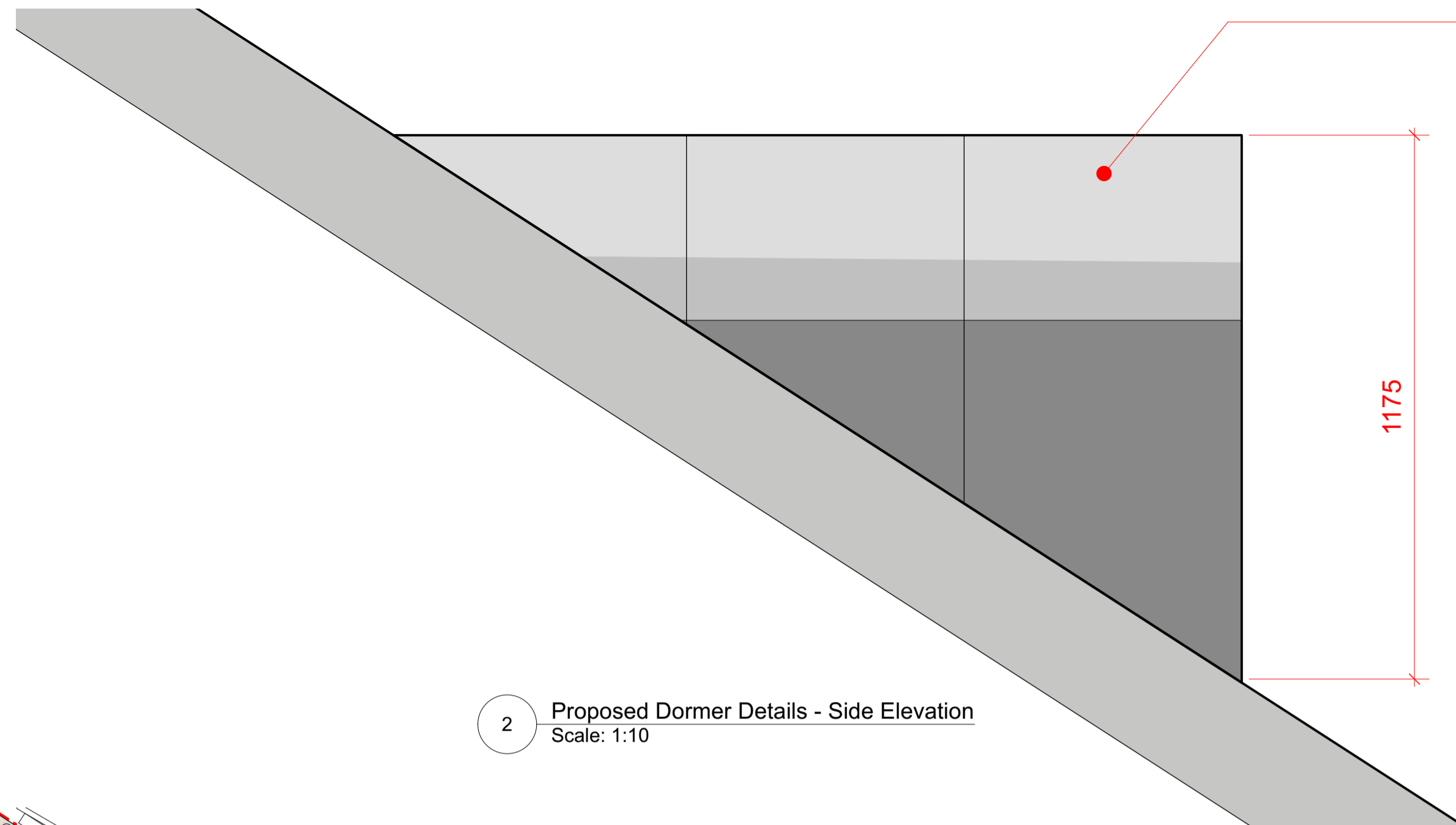


1 Proposed Dormer Details - Front Elevation  
Scale: 1:10

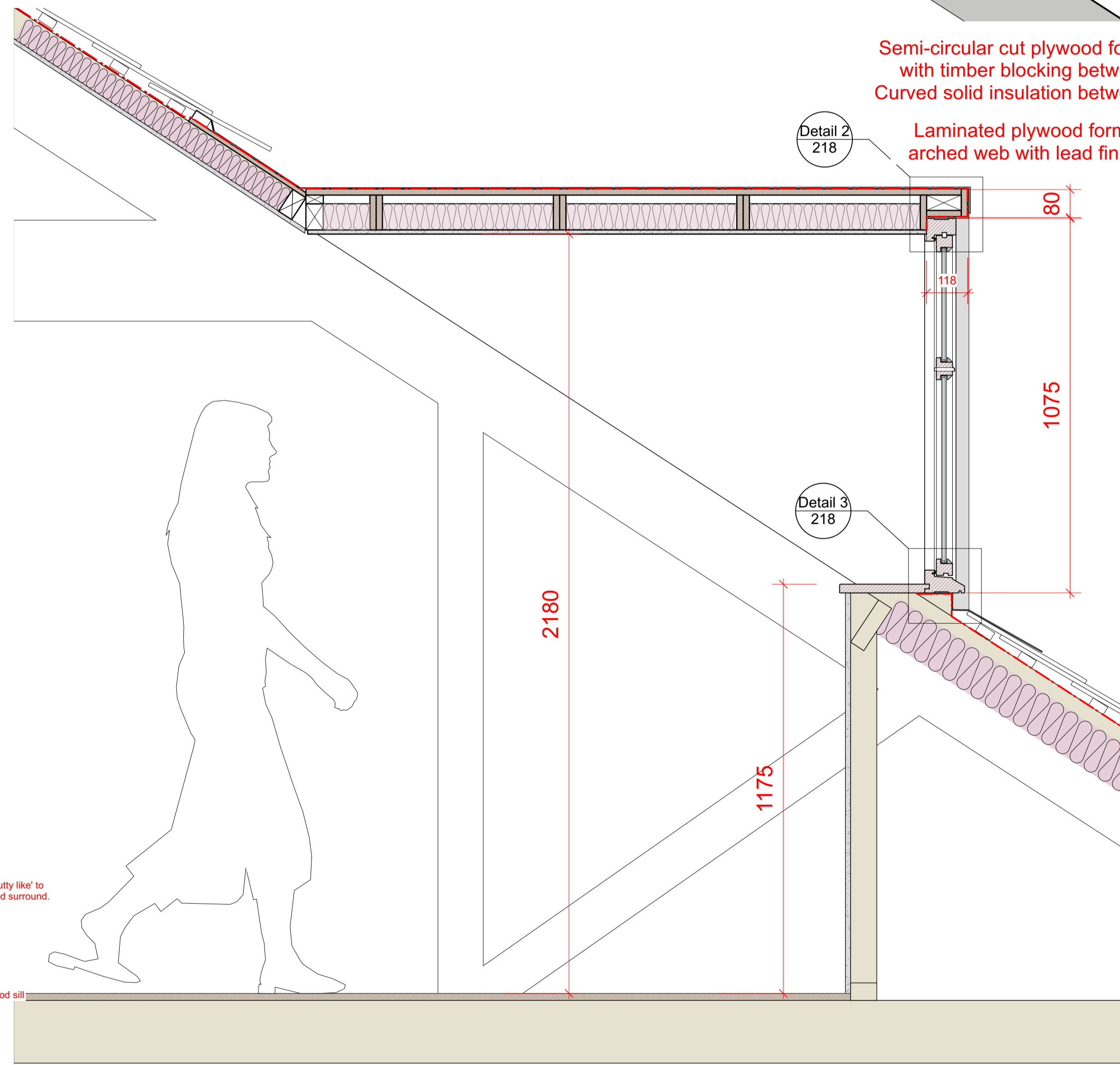
Patanised lead finish to barge.

Painted timber casement window.

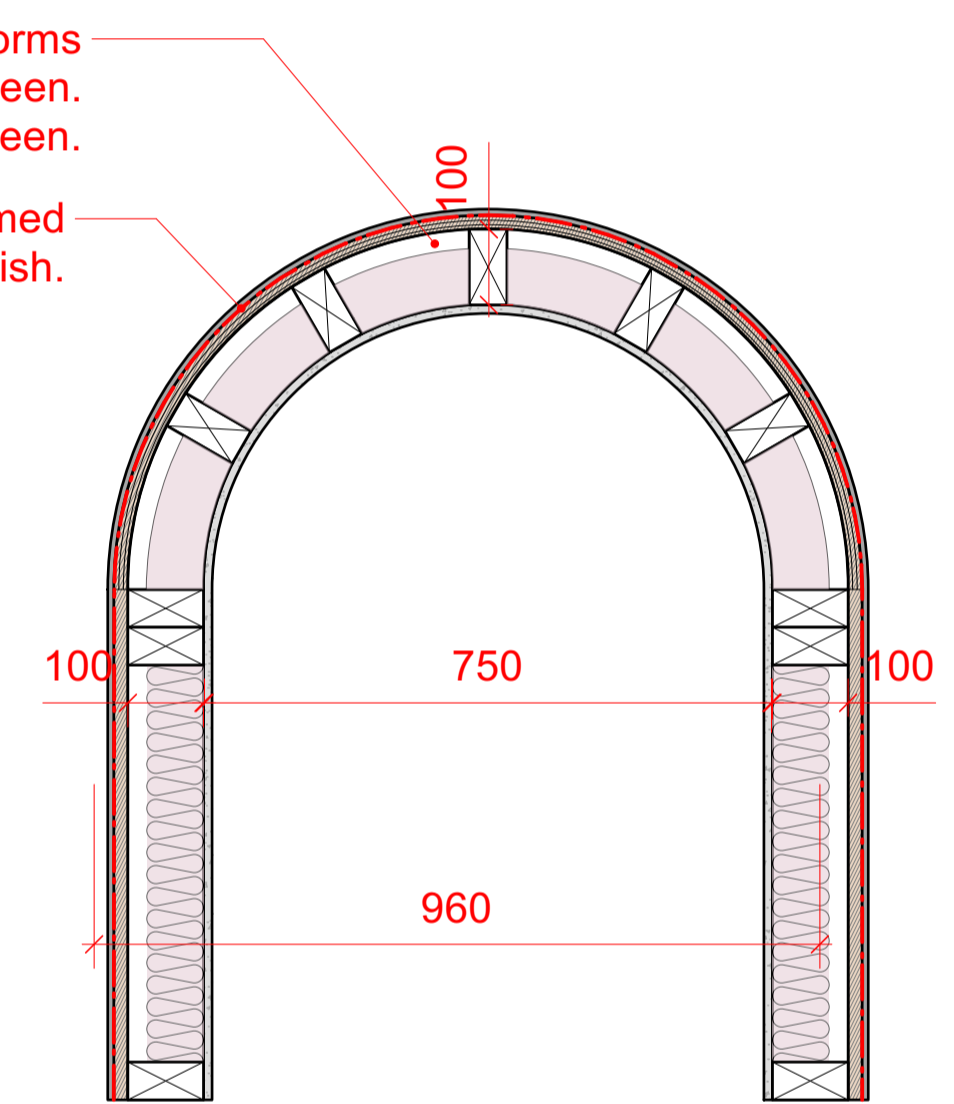


2 Proposed Dormer Details - Side Elevation  
Scale: 1:10

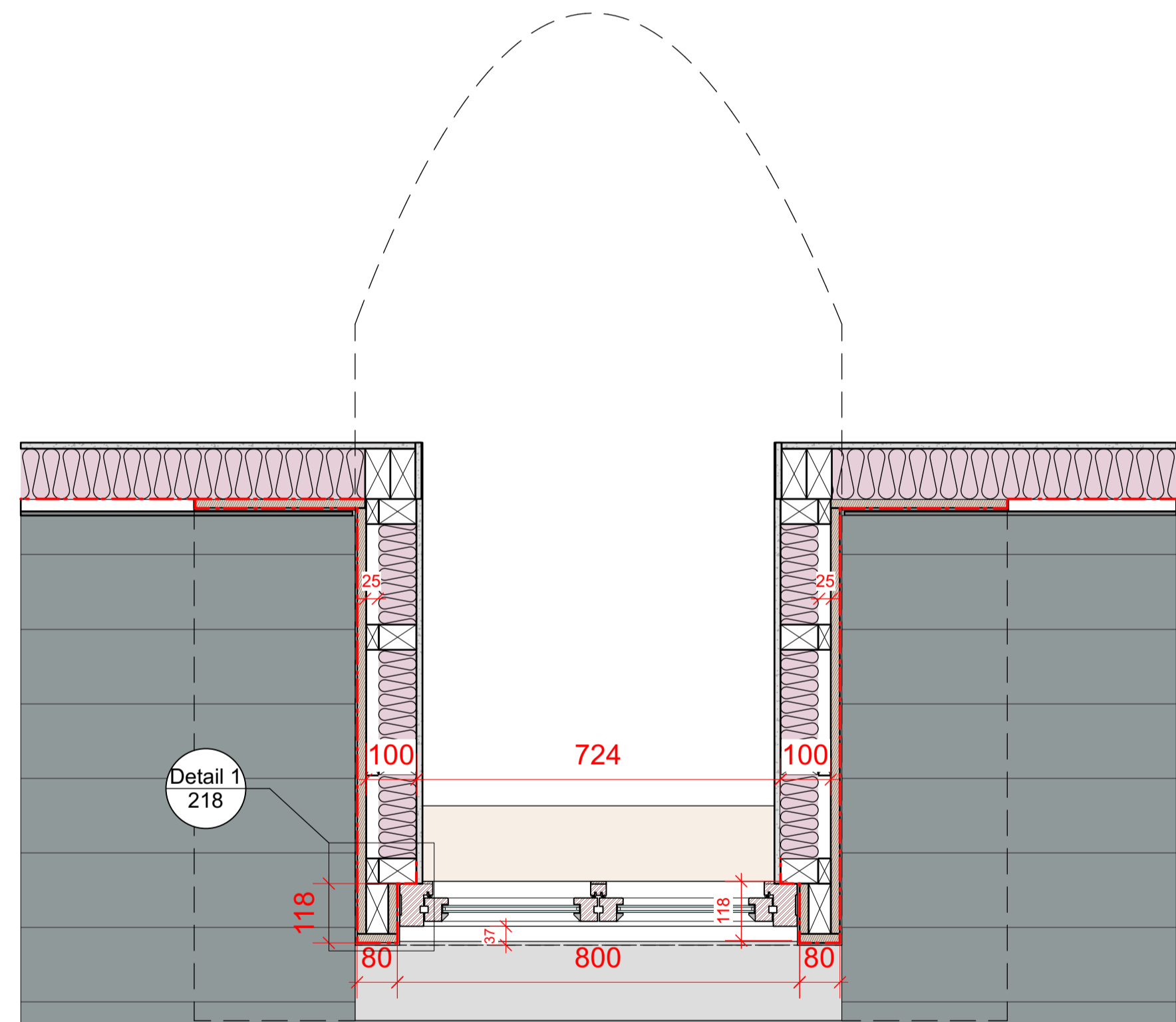
Patanised lead finish to round topped dormer window.



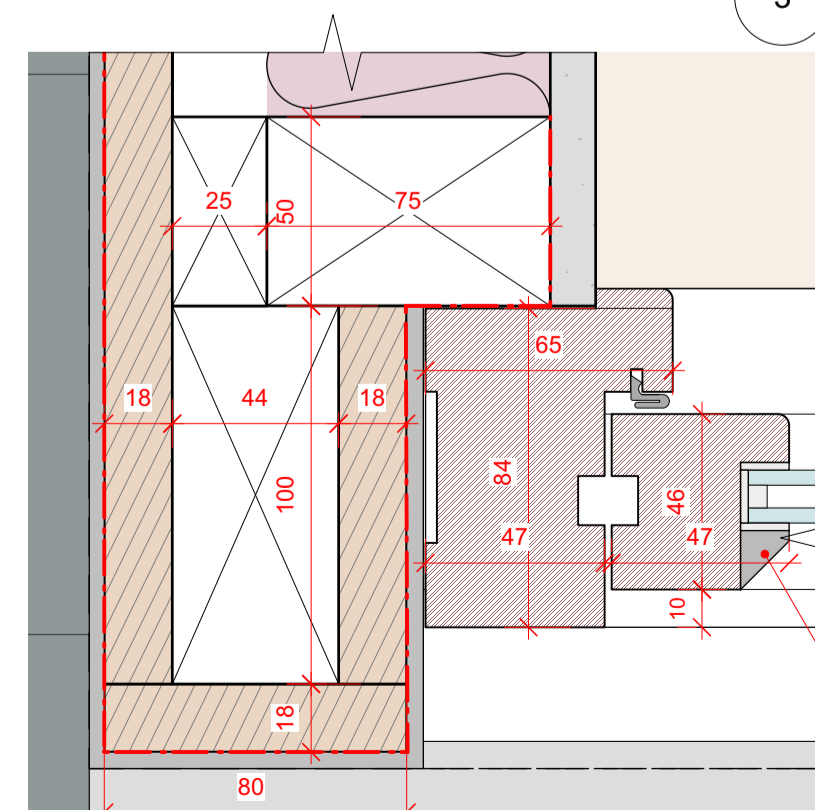
4 Proposed Dormer Details - Section A-A  
Scale: 1:10



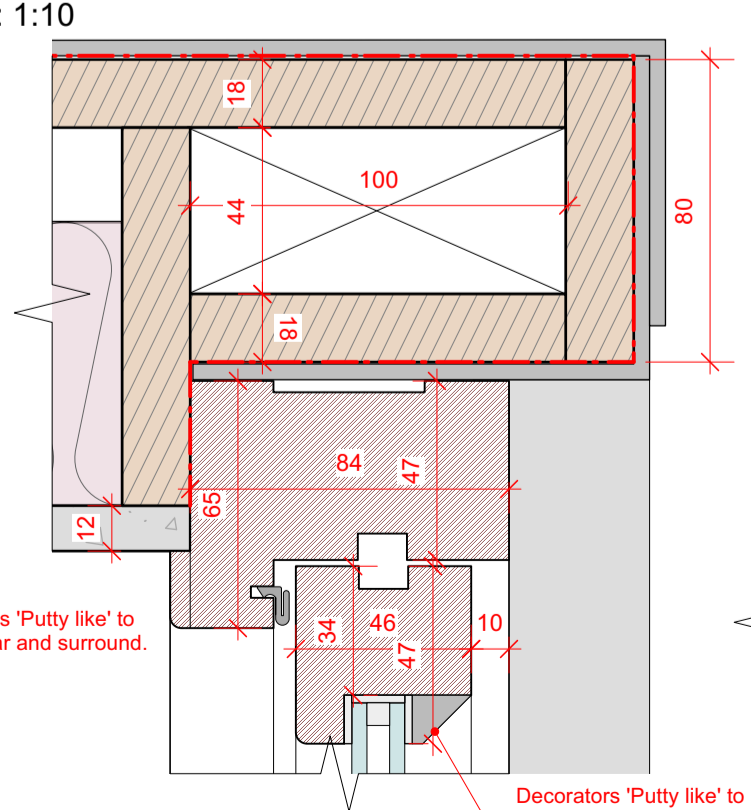
8 Proposed Dormer Details - Timber/Plywood Frame  
Scale: 1:10



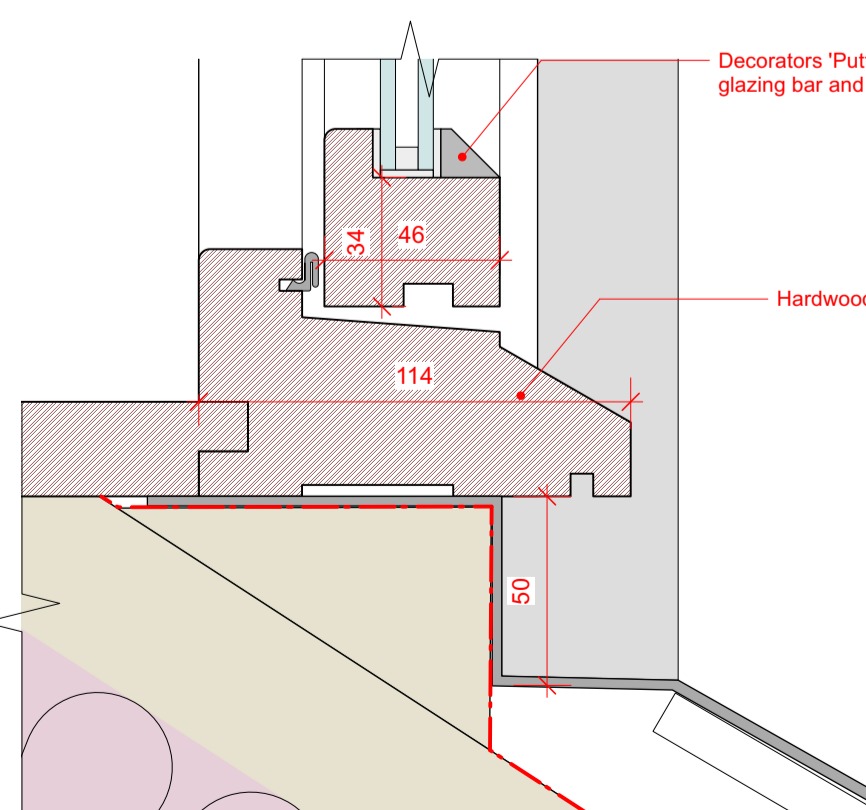
3 Proposed Dormer Details - Plan  
Scale: 1:10



5 Dormer Window Jamb Detail 1  
Scale: Half Actual Size



6 Dormer Window Head Detail 2  
Scale: Half Actual Size



7 Dormer Window Sill Detail 3  
Scale: Half Actual Size

Decorators 'Putty like' to glazing bar and surround.

Hardwood sill

Decorators 'Putty like' to glazing bar and surround.

Decorators 'Putty like' to glazing bar and surround.

REV	DESCRIPTION	DATE
JOB TITLE		
Proposed Re-roofing & Loft Conversion to		
The St. Brelade's Parish Hall		
La Neuve Route, St. Brelade JE3 8BS		
The Parish of St. Brelade		
DRAWING TITLE		
PRESENTATION		
PROPOSED		
DORMER DETAILS		
DATE	SCALE	
OCT 2021	1:10 @ A1	
JOB NO.	DRG NO.	REVISION
1009	PR07	-
		DRAWN
		MH
<p>T +44 (0) 1534 499383 F +44 (0) 1534 49938 E office@rva-architects.com W www.rva-architects.com</p> <p>1ST FLOOR, INDUSTRIA HOUSE, RED HOUSES, ST. BRELADE, JERSEY, JE3 8LD.</p> <p>RIVA ARCHITECTS </p>		