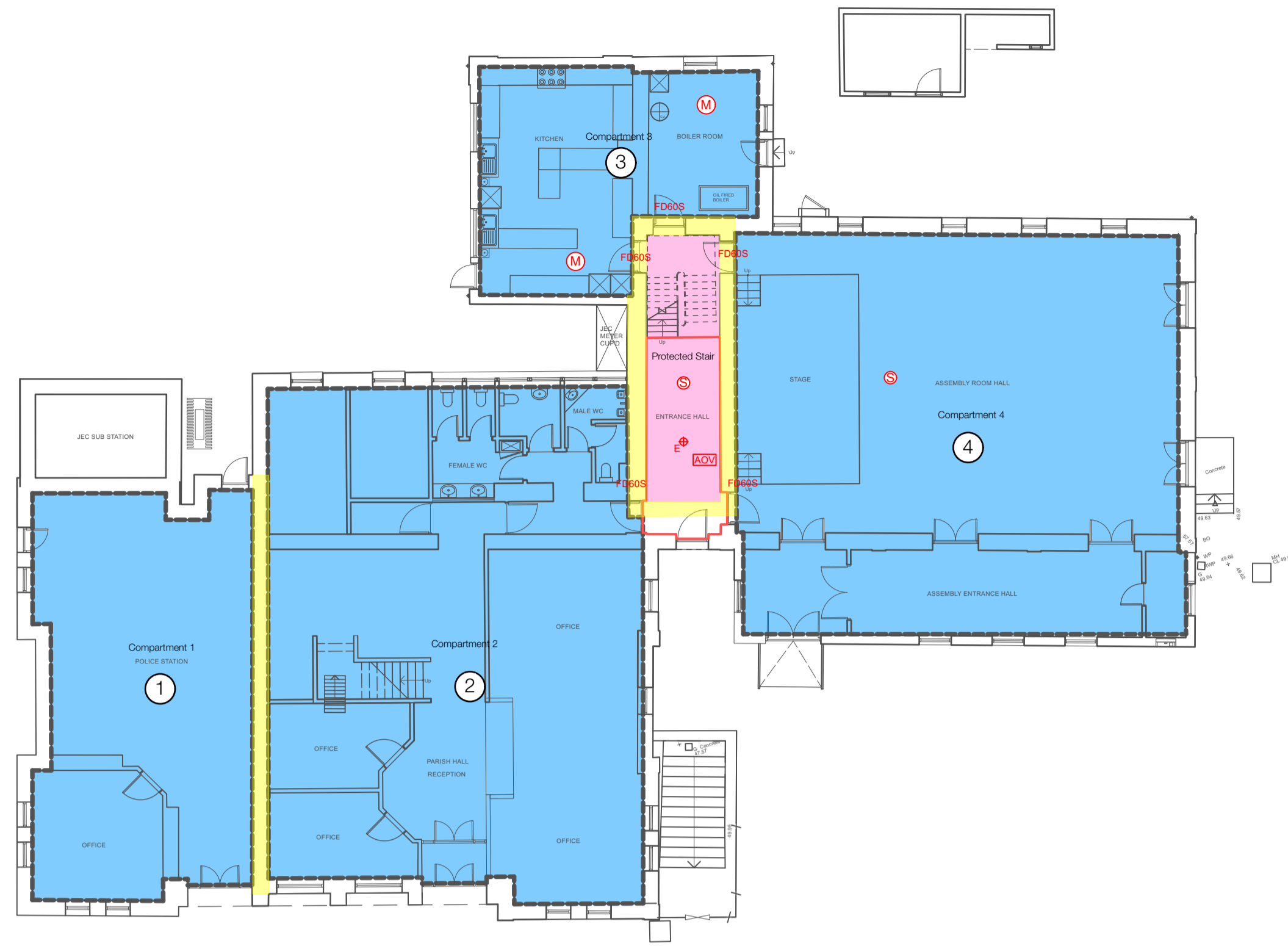


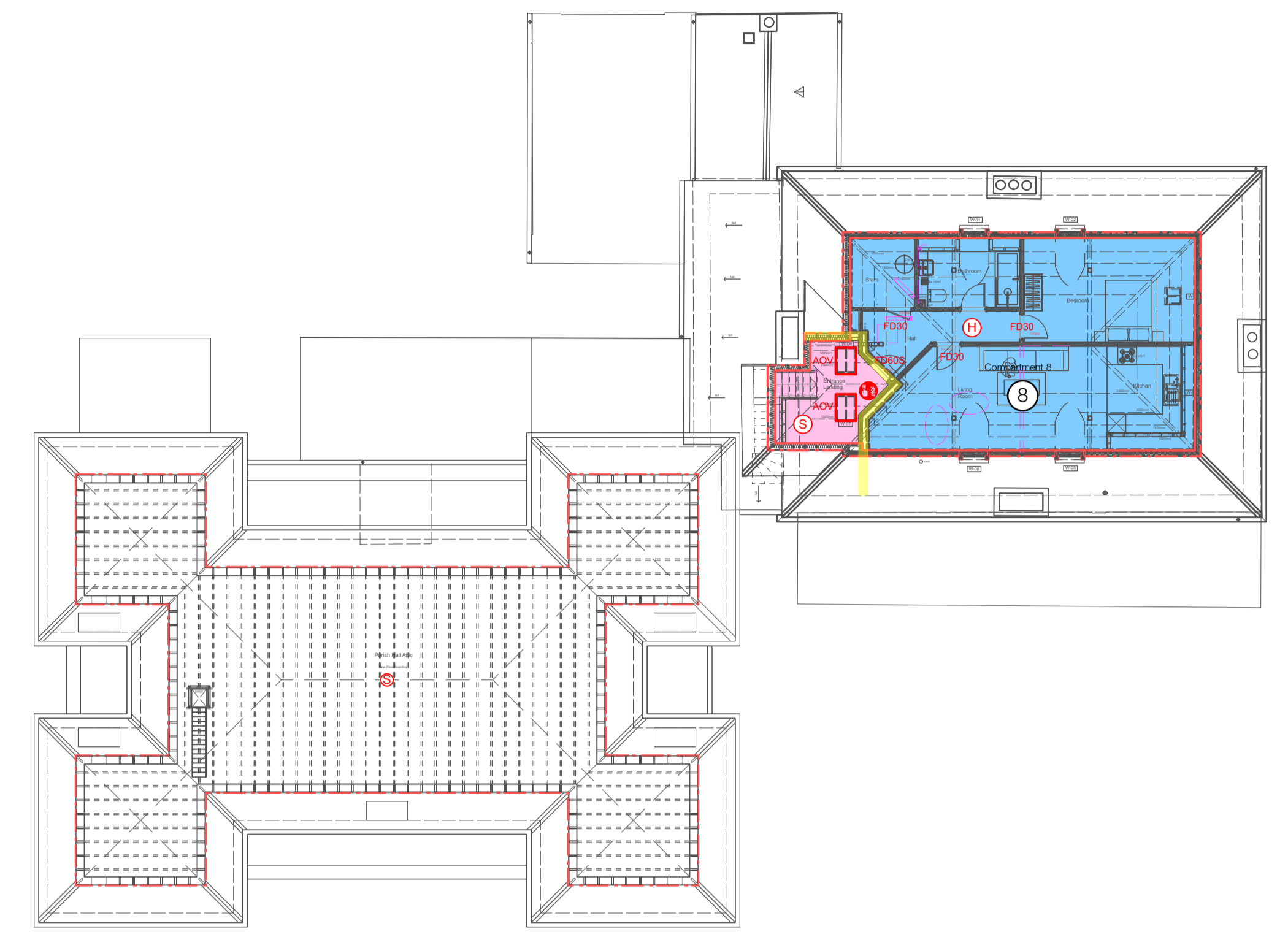
GENERAL NOTES:
 This drawing must not be copied in whole or in part without prior written permission of Riva Architects Limited. This drawing must be read in conjunction with other architects drawings & all schedules (Building Bye-Law check list and with all relevant structural engineering drawings, details and specifications. It is the contractor's responsibility to ensure that all work is carried out in accordance with all statutory requirements and to the approval of the building control officer (B.C.O.). The contractor is responsible for the setting out of the works. Any discrepancy found between this drawing and any other architect's detail drawing, schedule and/or specification must be reported to the architect before the work is carried out. Do not scale from this drawing. Refer only to written dimensions. All dimensions must be checked on site. The relevant British Standards for materials and their uses are to be adhered to. Manufacturers installation & fitting instructions must be obtained and adhered to at all times.

KEY

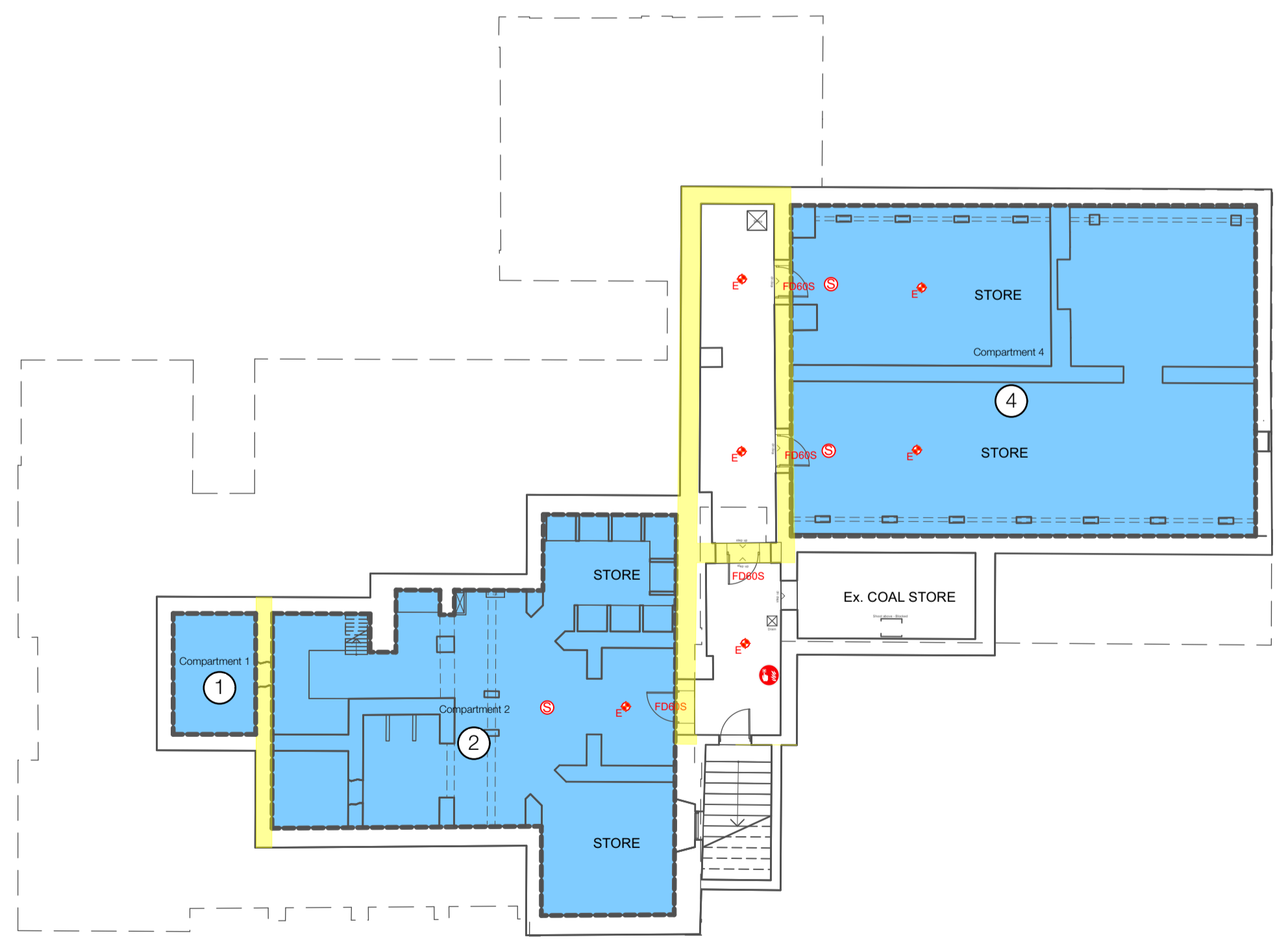
- M Multi-Sensor Detection
- H Heat Detector
- S Smoke Detector
- CO Carbon Monoxide Alarm
- E Emergency Light fitting
- AOV Automatic opening vent on fire alarm system with remote operation box.
- AOV Automatic Opening Vent link to LD System.
- FD60S 60 minute fire door with self closer
- FD30 30 minute fire door
- MCP Manual call point
- Compartment Wall
- Protected Stair
- 8 Compartment (Number)



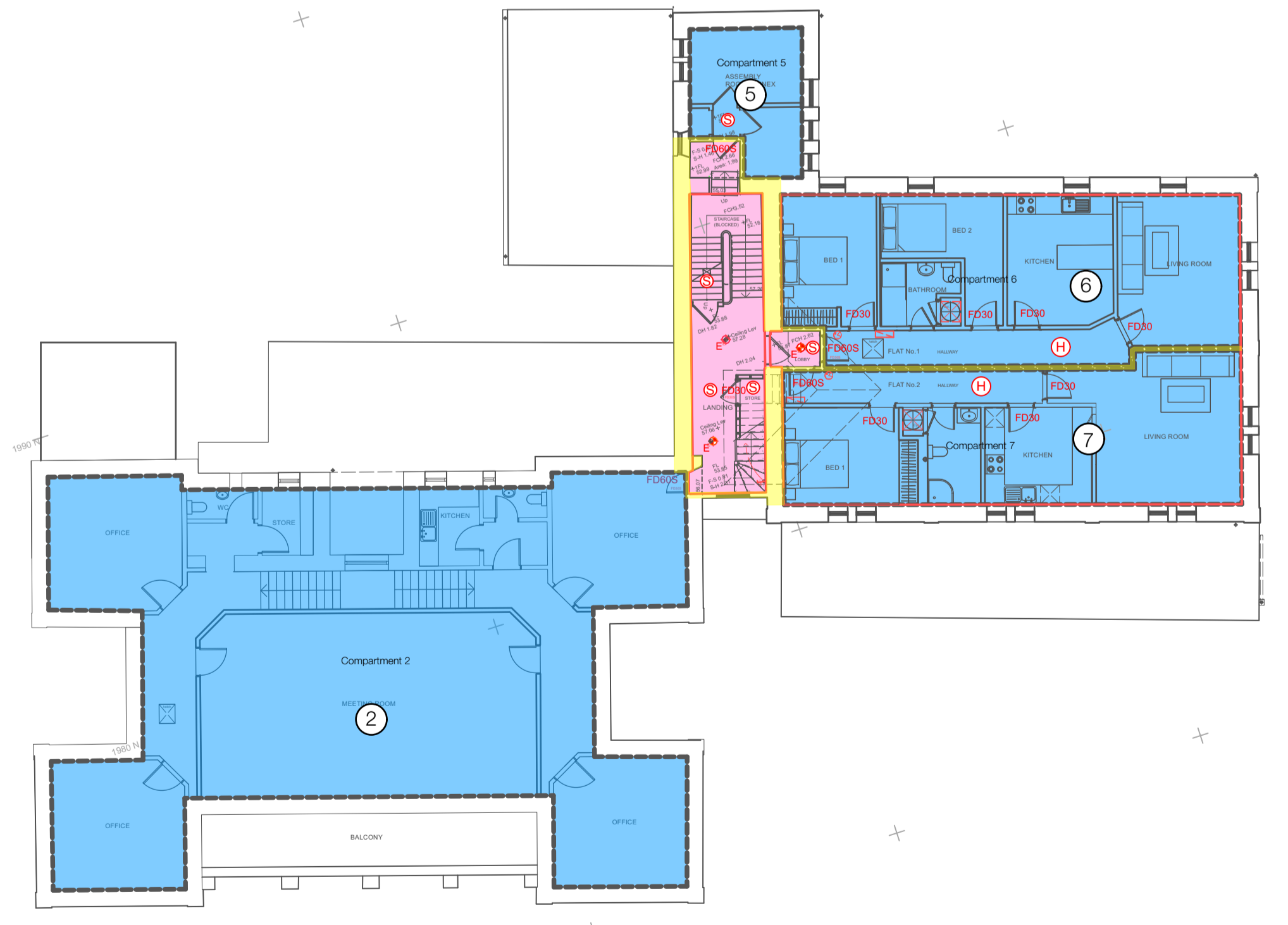
1 Proposed Ground Floor Plan
 Scale: 1:150



4 Proposed Second Floor Plan
 Scale: 1:150



2 Proposed Basement Floor Plan
 Scale: 1:150



3 Proposed First Floor Plan
 Scale: 1:150

REV	DESCRIPTION	DATE

JOB TITLE
**Proposed Re-roofing & Loft Conversion to
 The St. Brelade's Parish Hall**
 La Neuve Route, St. Brelade JE3 8BS
 The Parish of St. Brelade

DRAWING TITLE
PRESENTATION
 PROPOSED
FIRE STRATEGY MEASURES PLAN

DATE	SCALE
OCT 2023	1:100 @ A1

JOB NO.	DRG NO.	REVISION	DRAWN
1009	PR10	-	MH